

Exemplars in practice

Finding the needle in your observability haystack

Gibbs Cullen, Chronosphere
Tuesday, March 15th
SRECon 2022

Who am I?

Gibbs Cullen

Product Marketing Manager @ Chronosphere



- CNCF O11y TAG member
 - Former AWS PM
 - Twitter: @gibbscullen

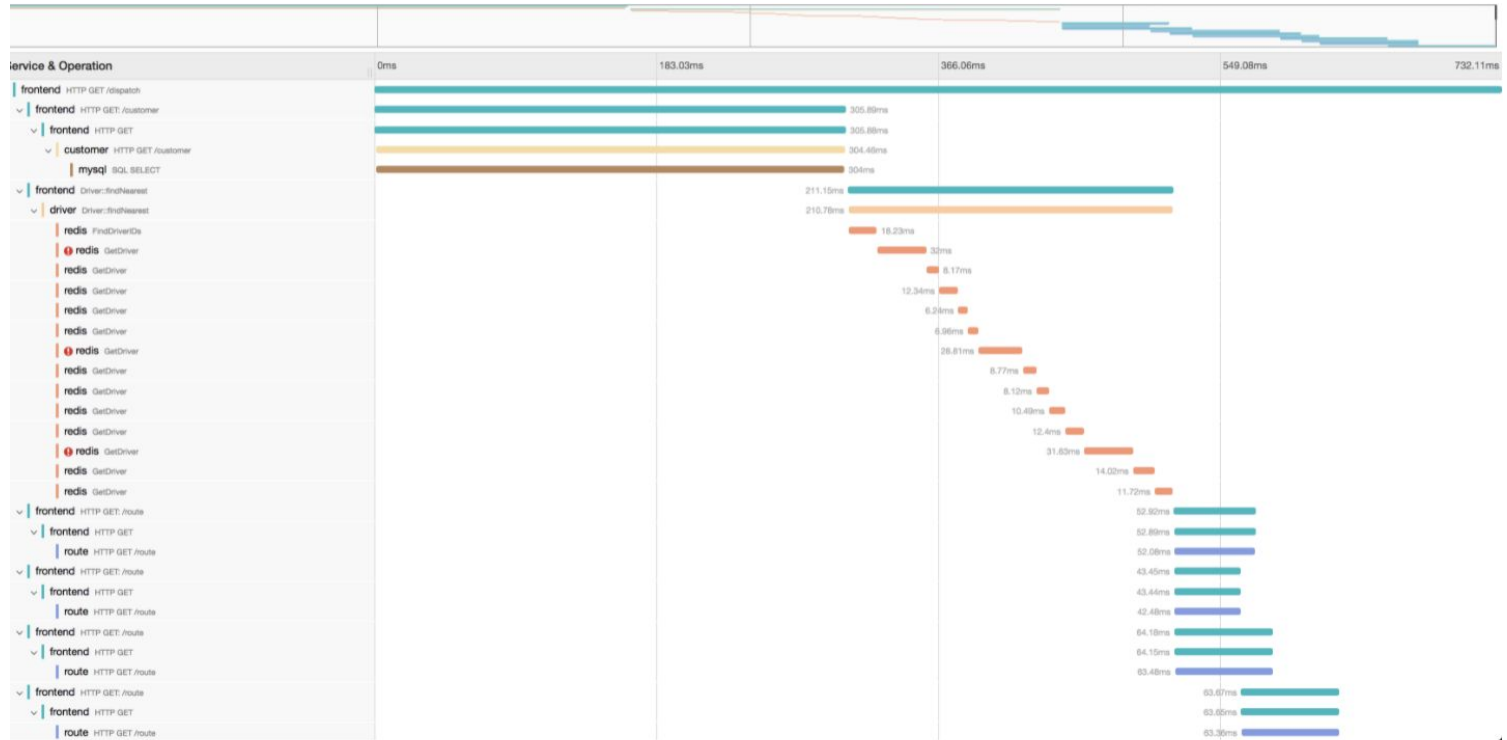


Life before exemplars

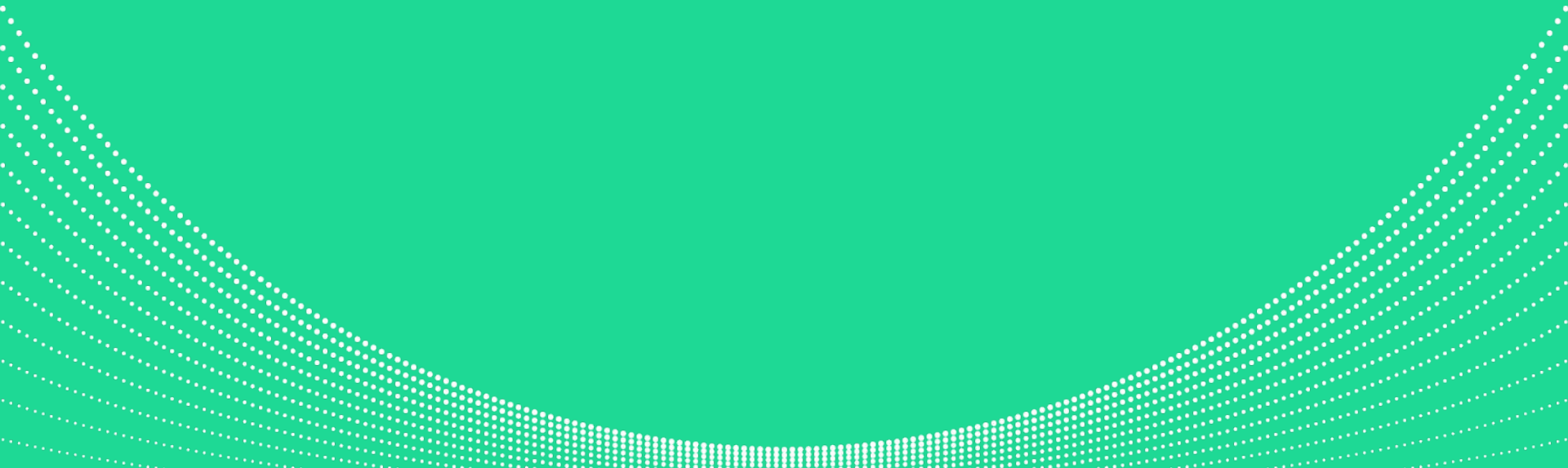
You receive an alert that the errors are spiking for a given service. Now what?



Context switch to look at trace data



What are exemplars?



Exemplars are...

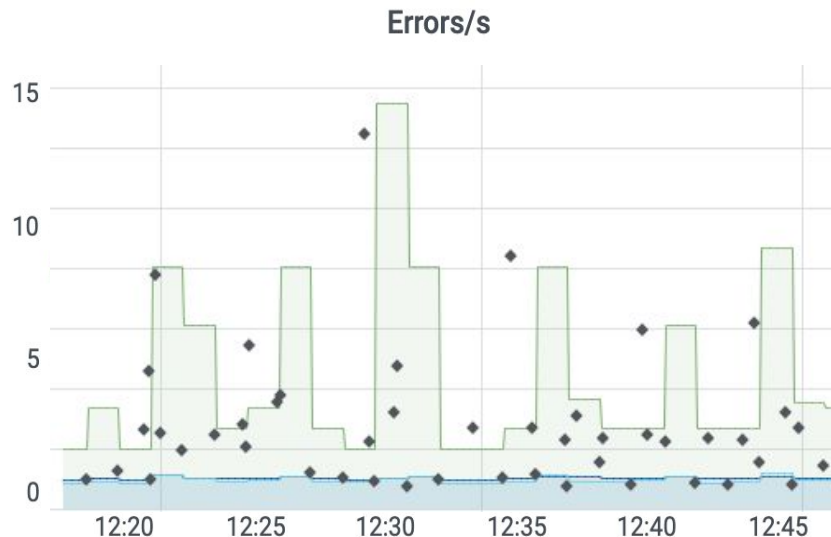
Metric data

+

Some other data (i.e. a traceID) that relates to the metric data

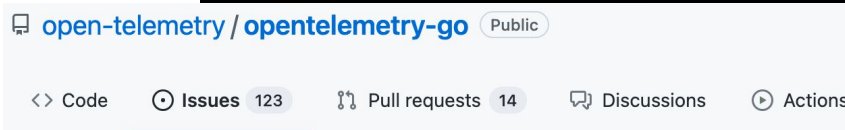
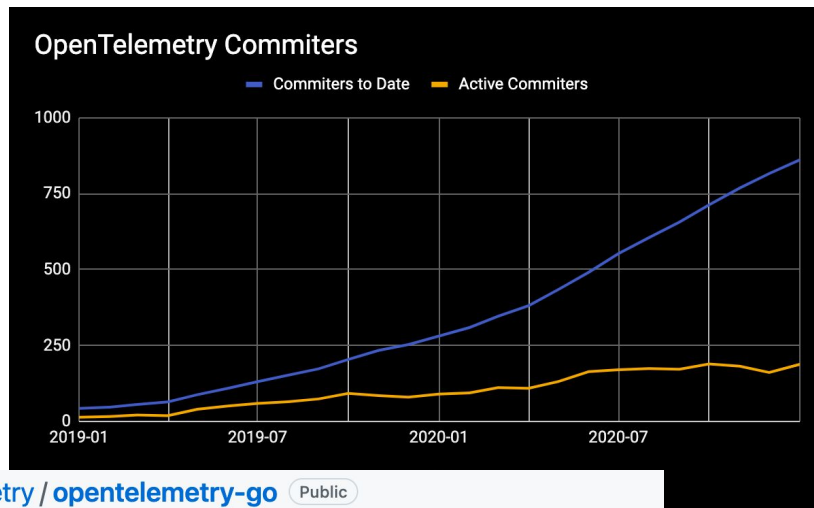
=

An easy way to jump from a metrics dashboard with many requests to a single example of a request



Exemplars are...

- ✓ Great for looking at binary problems
- ✓ A way for engineers to quickly jump between data types
- ✓ On the rise with open standards, like OpenTelemetry and OpenMetrics, as a way of linking open source metrics and tracing solutions

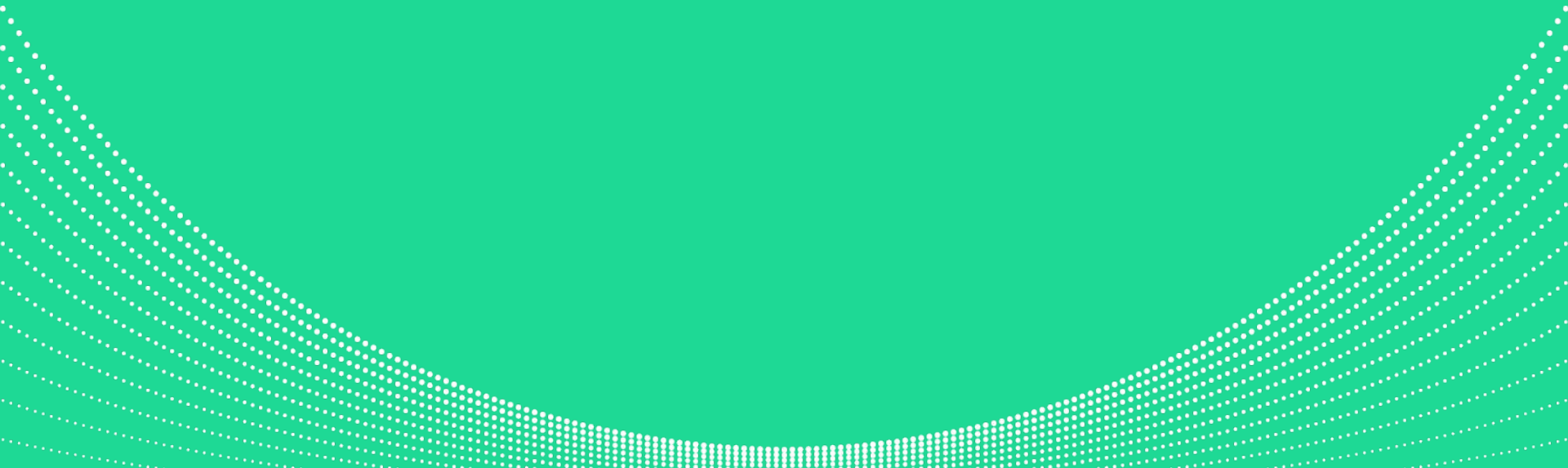


Add support for exemplars #559

Open rghetia opened this issue on Mar 16, 2020 · 3 comments

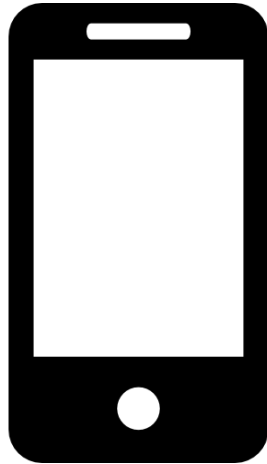


Exemplars in practice



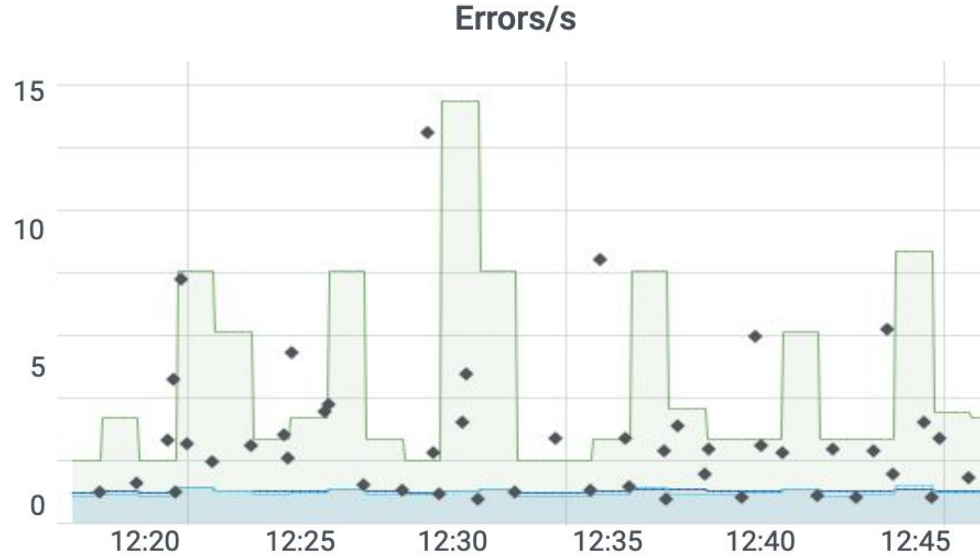
You receive an alert

You are alerted that your authentication service for a mobile application is seeing a spike in errors



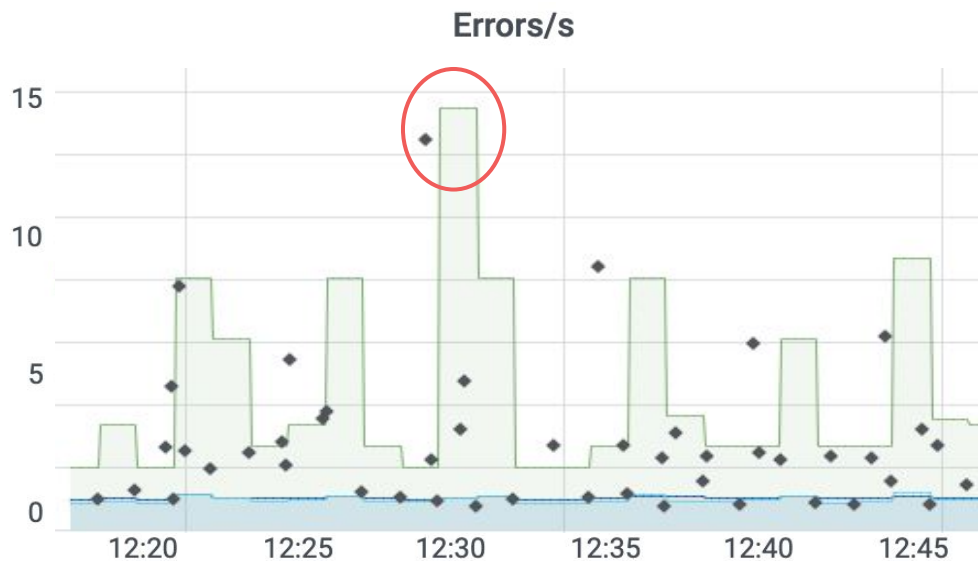
You triage the alert

You go to the relevant dashboard to begin your investigation



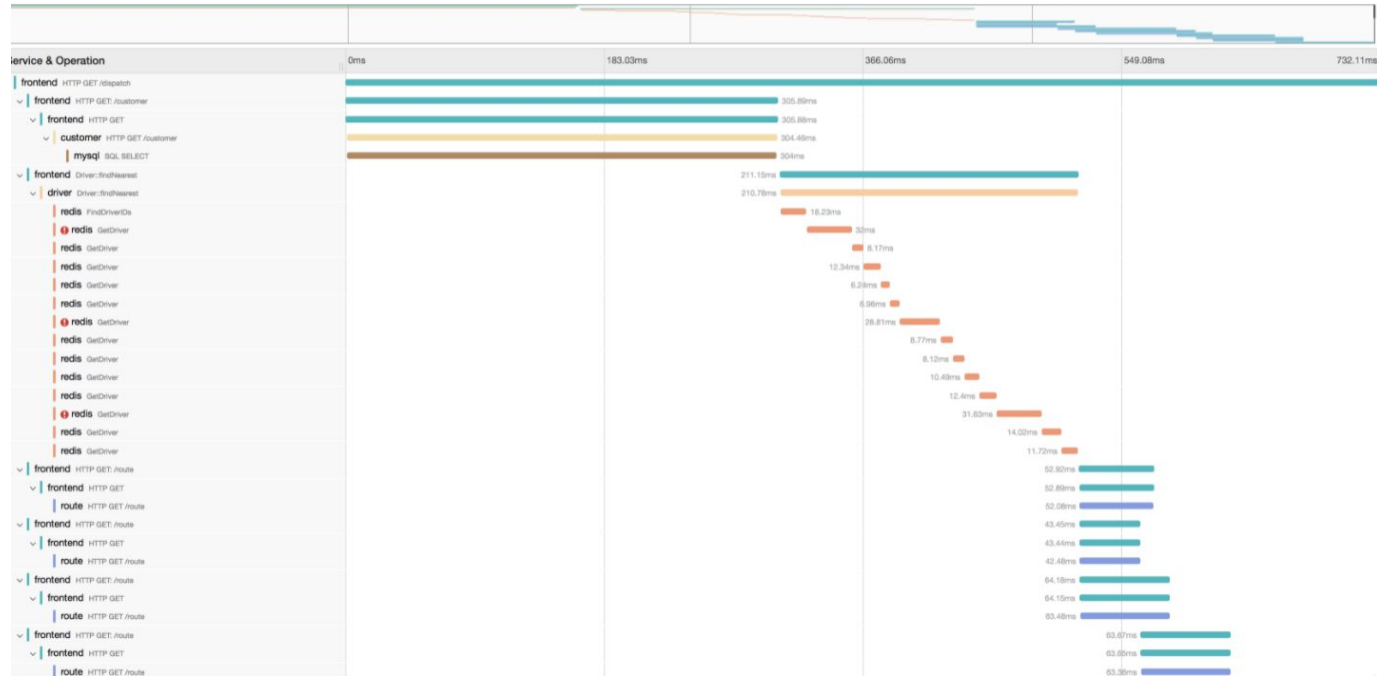
You triage the alert

You click on an exemplar around the time of the spike, which sends you to a tracing solution to view the distributed trace



You triage the alert

The distributed trace shows you the authentication request from an Android user has timed out



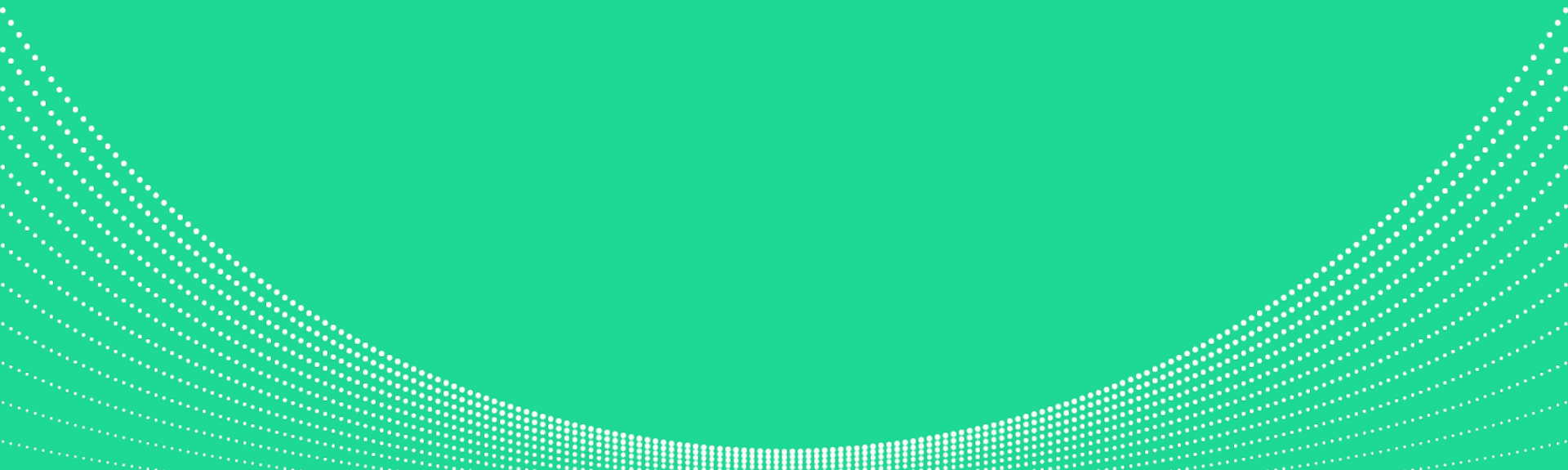
You try to understand the alert... but have lots of questions!

- Is the spike in errors related only to Android users, or are iOS users affected as well?
- Does this affect all versions of Android?
- Is there any correlation between client geography and errors?

You need more information!



When exemplars are not enough



Good for homogeneous, but not heterogeneous traces

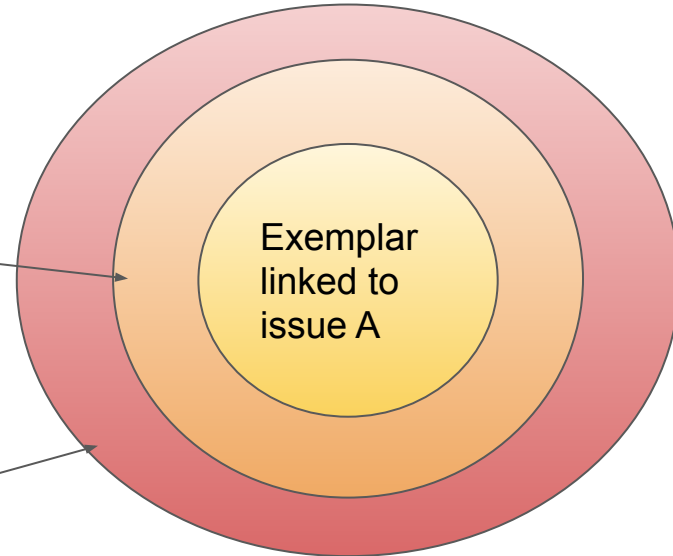
✗ Exemplars are tied to a single trace, not a population of traces

✗ A single trace rarely has enough context to resolve an issue

Issues A, B, C all active at time of alert, so how do you know for sure which one to focus on...

Issue B has larger impact, but not the problem causing the alert

Issue C has the largest impact and is causing the alert

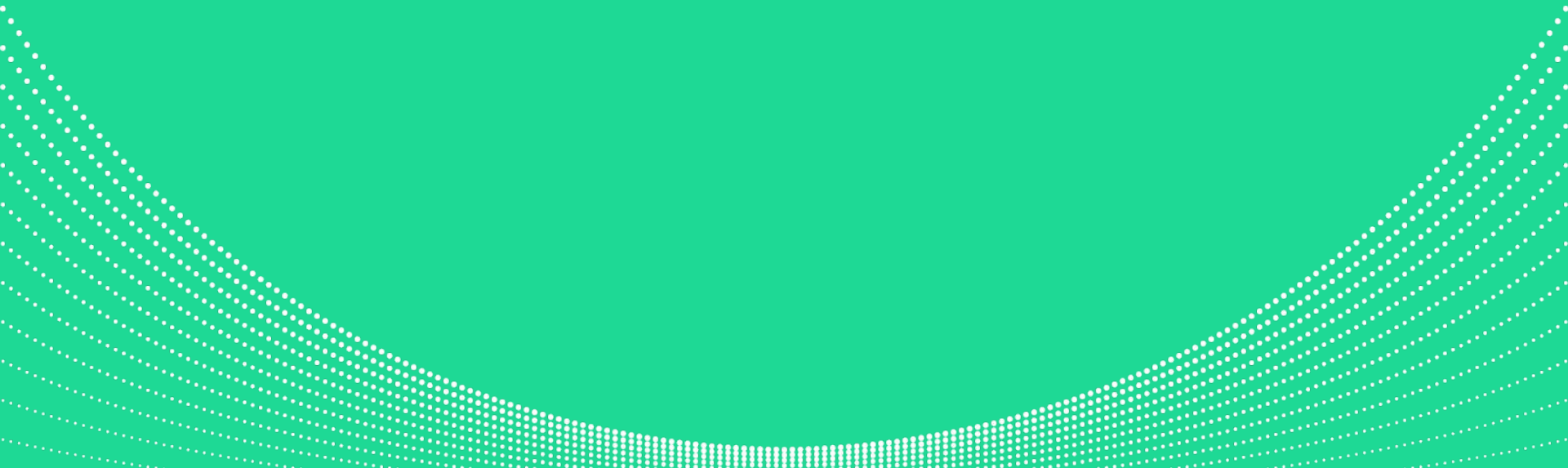


Too hard to identify “relevant” traces

- ✗ Applications don't have enough context to be able to publish the “right” exemplar
- ✗ It's like looking for a needle in your observability haystack!



Exemplars and beyond



Query traces to go beyond exemplars

- ✓ Link 100% of your metrics and traces – no aggressive or forced sampling
- ✓ Flexibly query across a population of exemplars (not just one) to eliminate false positives or noisy data
- ✓ Get context and identify patterns for your traces by setting which variables to query for



Trace Explorer

[Edit](#)
[Run ▶](#)

Search Summary

Time within the last 10m
Error Include any

Include

demo_musicfe
 POST /play-track

03:44:00 PM 03:44:40 PM 03:45:20 PM 03:46:00 PM 03:46:40 PM 03:47:20 PM 03:48:00 PM 03:48:40 PM 03:49:20 PM 03:50:00 PM 03:50:40 PM 03:51:20 PM 03:52:00 PM 03:52:40 PM 03:53:20 PM 03:54:00 PM

Stats by Services Top Tags

Request Count

demo_s3gateway > GetObject	0.12/s
demo_musicfe > POST /play-track	0.04/s
demo_albumart > /albumart.AlbumArt/FetchImages	0.04/s
demo_track > /track.Track/GetTrack	0.04/s
demo_authchecker > /authchecker.AuthChecker/Auth...	0.03/s
demo_subscription > /subscription.Subscription/Check...	0.03/s
demo_trackrights > /trackrights.TrackRights/CheckCa...	0.03/s
demo_memcached-subscription-1-dfw1 > set	0.03/s
demo_memcached-track-2-dfw1 > set	0.03/s
demo_memcached-trackrights-2-dfw1 > set	0.03/s

Error Percentage

demo_musicfe > POST /play-track	11.54%
demo_trackrights > /trackrights.TrackRights/CheckCa...	5.56%
demo_albumart > /albumart.AlbumArt/FetchImages	4.17%
demo_memcached-subscription-1-dfw1 > get	0.00%
demo_memcached-track-2-dfw1 > get	0.00%
demo_memcached-trackrights-2-dfw1 > get	0.00%
demo_mysql-trackrights-2-dfw1-ro > exec	0.00%
demo_mysql-track-2-dfw1-ro > exec	0.00%
demo_mysql-subscription-1-dfw1-ro > exec	0.00%
demo_mysql-track-2-dfw1-ro > exec	0.00%
demo_geopip > /geopip.GeoIP/GetGeoAreaForIP	0.00%

Median Duration (P50)

demo_musicfe > POST /play-track	2.3s
demo_track > /track.Track/GetTrack	1.3s
demo_albumart > /albumart.AlbumArt/FetchImages	798ms
demo_subscription > /subscription.Subscription/Chec...	395ms
demo_trackrights > /trackrights.TrackRights/CheckCa...	391ms
demo_s3gateway > GetObject	295ms
demo_memcached-track-2-dfw1 > get	198ms
demo_mysql-subscription-1-dfw1-ro > exec	193ms
demo_mysql-track-2-dfw1-ro > exec	190ms
demo_memcached-subscription-1-dfw1 > set	189ms

Tail Duration (P99)

demo_musicfe > POST /play-track	2.6s
demo_track > /track.Track/GetTrack	1.6s
demo_albumart > /albumart.AlbumArt/FetchImages	1.1s
demo_trackrights > /trackrights.TrackRights/CheckCa...	803ms
demo_subscription > /subscription.Subscription/Chec...	599ms
demo_s3gateway > GetObject	496ms
demo_mysql-track-2-dfw1-ro > exec	400ms
demo_memcached-track-2-dfw1 > get	400ms
demo_memcached-trackrights-2-dfw1 > get	394ms
demo_memcached-subscription-1-dfw1 > set	393ms

Trace Details Dependency Tree

Start time	Trace	Duration	Spans	Errors
03:51:52.785 PM	demo_musicfe > POST /play-track	2.4s	N/A	Contains errors
03:51:52.097 PM	demo_musicfe > POST /play-track	2.4s	N/A	No errors
03:51:45.888 PM	demo_musicfe > POST /play-track	2.4s	N/A	No errors
03:51:44.196 PM	demo_musicfe > POST /play-track	2.3s	N/A	No errors

Thank you!

Come see us at booth #200 or follow
@chronosphereio on Twitter and LinkedIn